

Digital Video Security

*Comprehensive Video Security
with Talon DVR!*



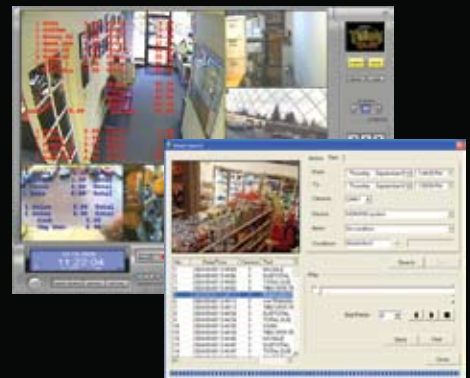
Talon Server Program Features

- 1,4,6,9,10,16,12 multi channel view support
- Audio monitoring and recording
- Multiple search methods
- Pan, Tilt, Zoom & Focus control support
- Hardware Watchdog for auto reboot
- AVI / MPEG4 file saving with watermark
- Event Notification:
 - Beep, Mark, Pop-up, Talon-Net Remote notify, Relay output, E-Mail message w/ text & image, Phone message via modem
- User access security
- TCP/IP support for remote access
- Whole or Partial image motion recording
- Image Masking feature (LiveCap only)

Talon-Net Client Program Features

- Multi Net DVR Central Station support
- Remote access to multiple DVRs
- PTZ control including preset and tour modes
- Image controls for brightness, contrast, hue, resolution, compression
- Display live video from server
- Search recorded data by time/date, motion, text match
- Save remote data locally while viewing
- Two way voice communication

Exceptional Clarity and Connectivity



POS Text Insertion

- Supports POS, ECR, Access Control & ATM
- Search by Text Match and Date / Time
- RS-232 / 422 / 485 and TCP/IP connectivity
- Up to 32 devices per DVR Server
- Unique Parsing Utility for custom applications
- User defined Item Search settings

Talon™ DVR Specifications

LivCAP / ACAP Features

- Up to 32 video input / 16 sensor in / 4 relay out (optional on ACAP)
- Up to 2 sound input (16 channels optional)
- Hardware watchdog
- Multi View TV Out (1, 4, Normal) (Single View only on ACAP)
- One board real time display and record
- MPEG4 soft CODEC Recording
- No Frame Loss
- High Resolution 352x240, 704x240, 704x480
- Pan / Tilt / Zoom support (optional on ACAP)

MPG / AMX Features

- Up to 32 video input / 16 sensor in / 4 relay out (optional on AMX)
- Up to 32 integrated sound input
- Hardware watchdog
- Single View TV Out
- real time display and record (30fps / Chan)
- MPEG4 On-Board Hardware Processor
- No Frame Loss
- High Resolution 352x240, 704x240, 704x480
- Pan / Tilt / Zoom support (optional on AMX)
- Small recording frame size (1~3 KB / Frame)
- Low CPU Load

Direct Web Support

- Microsoft Internet Explorer support
- No special software required
- OCX Support
- View Live and Recorded images
- Multiple Search Methods: Date/Time, Motion, Text, Single & Multi
- Audio Search
- 2 Way voice communication
- Image Saving: AVI Clip or JPEG Still



MODEL	RECORD FRAMES	VIEW FRAMES	VIDEO CHANNELS	AUDIO CHANNELS	TV-Out CHANNELS	SENSOR INPUTS	RELAY OUTPUTS	PTZ Control
Talon DVR ACap (Software Compression / Entry Level)								
120A16	120	120	16	2	1	16 (opt)	4 (opt)	(opt)
Talon DVR LivCap (Software Compression)								
120N16	120	120	16	2	1 - 16	16	4	Yes
240N16	240	240	16	2	1 - 16	16	4	Yes
12016LIV	120	480	16	2	1 - 16	16	4	Yes
24016LIV	240	480	16	2	1 - 16	16	4	Yes
Talon DVR LivCap 32 (Software Compression)								
240N32	240	240	32	2	1 - 32	16	4	Yes
480N32	480	480	32	2	1 - 32	16	4	Yes
Talon DVR MPG (Hardware Compression)								
MPG12004	120	120	4	4	1	4	4	Yes
MPG24008	240	240	8	8	1	8	4	Yes
MPG48016	480	480	16	16	1	16	8	Yes
Talon DVR MPG AMX (Hardware Compression)								
AMX48016	480	480	16	16	1	16 (opt)	8 (opt)	(opt)
AMX96032	960	960	32	32	1	32 (opt)	8 (opt)	(opt)

PDA Support

- Windows CE, Windows Mobile support
- Wireless access to DVR
- Live view & search over cellular phone internet connection

